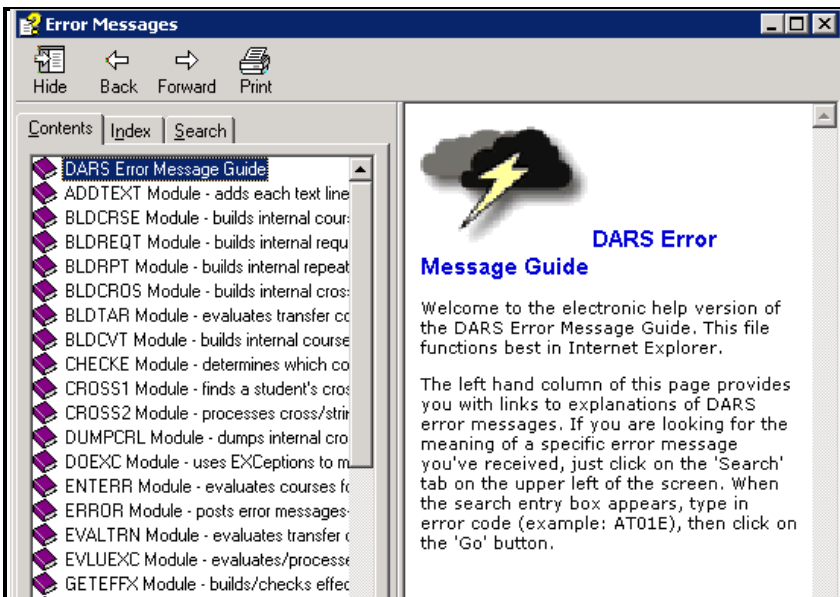
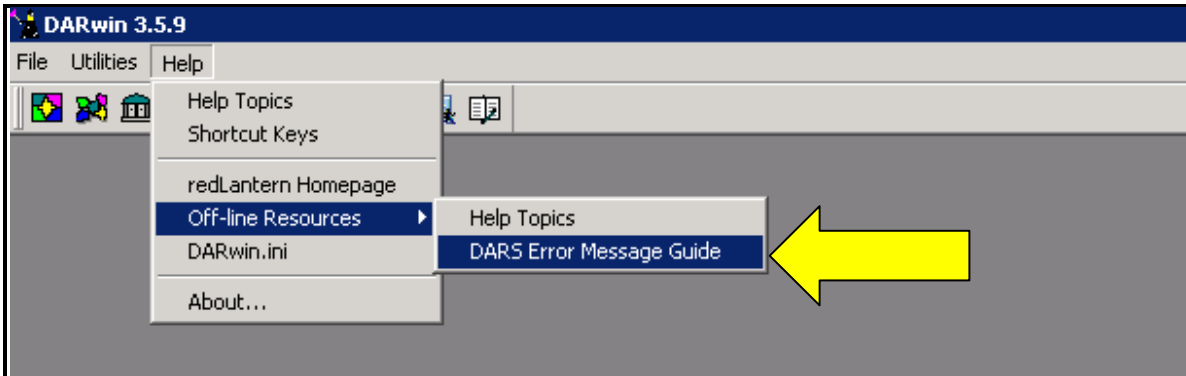




# Error Message Guide

Access the DARwin Error Message Guide through DARwin Help

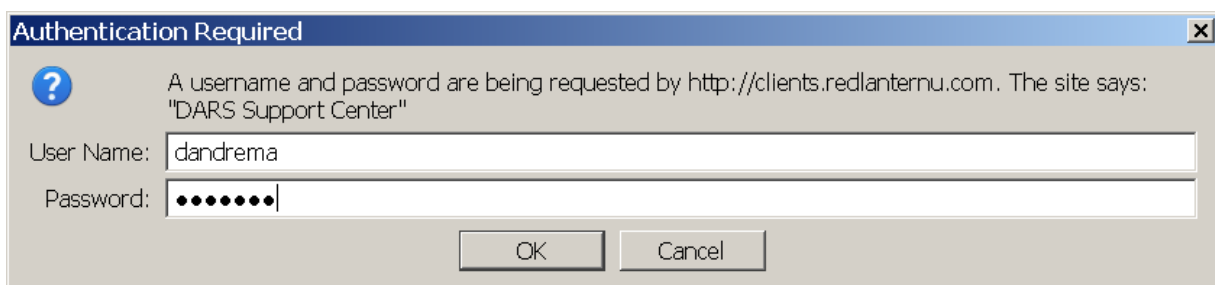


OR

Access the Error Message Guide by creating a bookmark in your preferred browser:

[http://clients.redlanternu.com/licensed/guide/FlashHelp\\_Folders/RH\\_ErrorMSG\\_0305/error\\_messages.htm](http://clients.redlanternu.com/licensed/guide/FlashHelp_Folders/RH_ErrorMSG_0305/error_messages.htm)

The Error Message Guide on-line requires that you log in for access.



All MnSCU encoders are eligible for a redlantern account. If you do not have an account, request an account user name and password at:

<http://clients.redlanternu.com/home/display/SUP/redLantern+Support+Center>

**redLANTERN™** Illuminating Education™

*Support Center*

Home Products Issue Tracker redLanternU.com View Edit Log in

Dashboard > Support > redLantern Support Center

**redLantern Support Center**

You are not logged in. Please [click here to login](#).

Forgot User Name or Password? [Login Help is here.](#)

If you are from a redLantern Client Institution, you can [request an account](#).

**Products**

- u.direct  
choose your future™
- u.select  
get the credit you deserve™
- u.achieve  
advancing graduation™

**Support Services**

**Issue Tracker (formerly OWL)**

Search the knowledge base, **ask functional or technical questions**, review product bugs and enhancements.

**Services**

Learn about implementation services and recommended steps for new clients. Find information about the Client Advisory Board, User's Conference presentations, redLantern employees, and more.

**My Profile**

Review your personal account profile, your institution's license status, and register for workshops and online training.

**News and Events**

- [University of Houston Joins redLantern's u.select Network](#)
- [Survey](#)
- [University of Utah goes live with redLantern's u.direct](#)
- [University of Houston Press Release](#)

**Troubleshooting Access to Products & Support Services**

Posted: 12-18-09