

INCLTOP #TS #PL USING TEST SCORES OR PLACEMENT LEVELS TO CONTROL DARS PROCESSING

Assigning a DARS System Condition Code and/or a course based on a student's Test Scores or Test Placement levels in ISRS

- As of June 9, 2008 a date range may be specified for each test score range
 - Date range format is YYYYMMDD

Assigning a System Condition Code

Using #TS or #PL, a Requirement or Sub-Requirement may be turned on or off for a student with a test score or placement level that falls within a specific score and date taken range. This document will show how to assign a System Condition Code to a student based on a Score assigned to that student in ISRS in the Student Test Score screen (ST1100UG – Test Score tab) or based on a Placement Level in the Student Placement Levels screen (ST3506UG). While there may be other uses for this functionality, using a system condition code or a generated pseudo course to turn on a Requirement or Sub-requirement are most common.

#TS:

The ISRS Student Test Score screen looks like this:

Student Information
 ST1100UG 01.23 DVLP Northland Community & Technical College 06/03/2008
 Bush, Rose Tech Id: 00127910 SSN: 999098547 Search: G Kp0
 Modules: AP, AR, CE, FA, PA, RG, ST Other Screens: [dropdown]
 Summary Addr Demographics Adm/Enr Area Study/Int Cohort/Prog Stnt Maint Education Trsf Courses **Test Scores** Cancel Log

Input Source	Test	Test Date	Score	Percent	Form	Attempted	CAPP%
MnSCU Defined Tests							
Loaded, L	0163, Accuplacer Reading Comprehension	04/14/2003	43.00				
Loaded, L	0164, Accuplacer Sentence Skills	04/14/2003	35.30				
Loaded, L	0165, Accuplacer Arithmetic	04/14/2003	29.40				
Test Subscores -> GKp3							
Institution Defined Tests							
Official, O	5009, North Dakota Language TABE	06/03/2008	83.00				
Test Score Overrides -> GKp1 Student Placement Levels -> GKp2							

In order to assign a System Condition Code an entry as shown below will need to be made in INCLTOP:

Common	Reporting	Reference/Other	Text
Header			
1	Test Scores:		
2	#20(0014,0164,0165,0166)#	} Test Score display only	
3	#TS(0164,,0.00,35.00,00000000,20070630)	[M]	} Test Score processing
4	#TS(0164,,35.01,120.00,00000000,20070630)	[Y]	
5	#TS(0164,,0.00,39.00,20070701,99991231)	[M]	
6	#TS(0164,,39.01,120.00,20070701,99991231)	[Y]	
7	#TS(0165,,0.00,45.00)	[K]	
8	#TS(0165,,45.01,120.00)	[k]	

In this case #TS is being used to assign a System Condition Code of “M” to a student with a score on Test 0164 falling somewhere between 0 and 35 and if the test was taken on or before June 30, 2007. If the student took the test on July 1, 2007 or later, and if their score falls between 0 and 39, #TS will assign a System Condition Code of M. *If test cut scores change for a specific test, you will need at least four entries for that test.*

The format shown above for assigning a System Condition Code contains no spaces and the components are as follows:

#TS(Test,Form,Minimum Score,Maximum Score,*Begin date,End date*)[System Condition Code]
Begin date,End date are new parameters which may be specified as of June 9, 2008. *Date range format is YYYYMMDD. Use 00000000 for 'beginning of time' and 99991231 for 'end of time'. Date range is not required. If no date ranges are specified, logic will read date range as 00000000 to 99991231.*

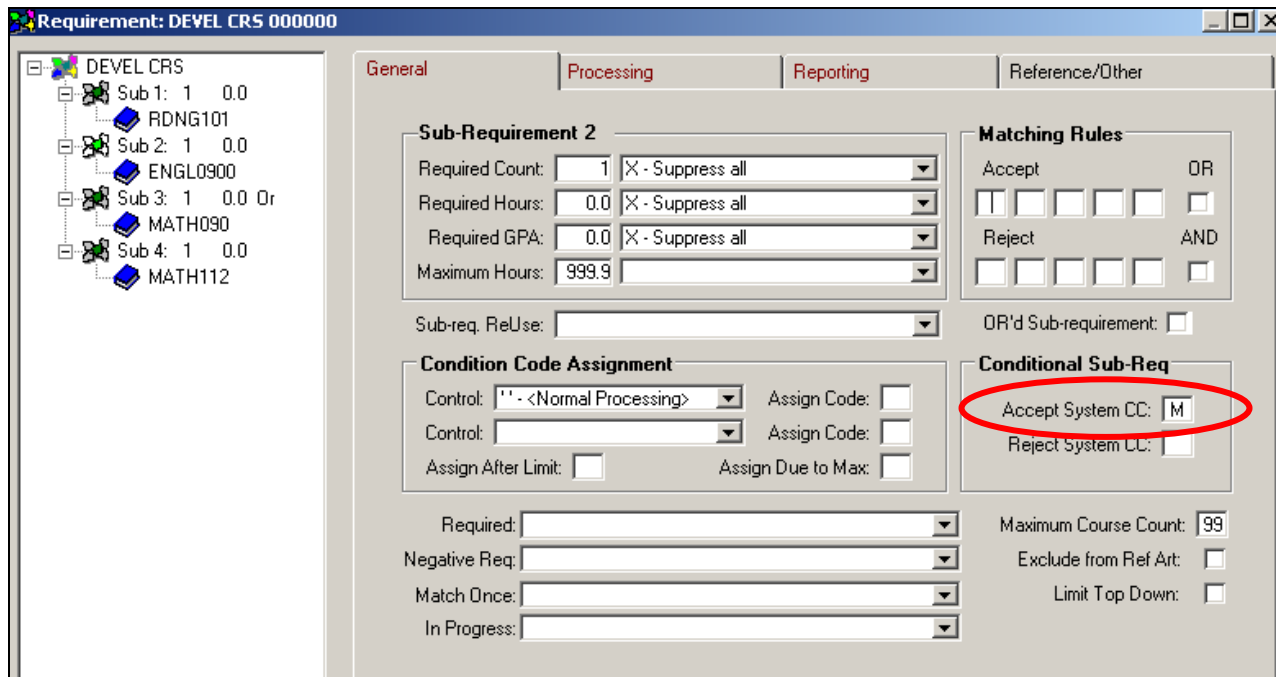
(Note: The examples in INCLTOP above have no Form for the test.)

The Requirement for this Test Score range is shown below:

The screenshot shows a software interface for configuring a requirement. The title bar reads "Requirement: TESTS 000000". On the left, a tree view shows a folder "TESTS" containing "Sub 1: 1 0.0", "ENGL0900", and "DVLP ENGL \$". The main area has several input fields: "Requirement Name: TESTS", "FYT: 0000 00", "LYT: 9999 99", "Title: REQUIRED COURSES FOR TEST SCORES FROM 0 TO 35 if taken prior to July 1, 2007", "Web Title:", "Pseudo Name: TESTS", "Requirement Type:" (dropdown), "Last Modified: Nov 14, 2003 9:59:13 AM", and "By: JOHNSODA". Below these are tabs for "Common", "Reporting", "Reference/Other", "Text", "Limits (X-line)", and "Used By". The "Common" tab is active, showing "Completion Rules" (Required Sub-req's: 1, Required Hours: 0.0, Required GPA: 0.0, Required Count: 0, Maximum Hours: 999.9) and "Condition Code Assignment" (Assignment Control: dropdown, Assign Condition Codes: checkboxes). The "Matching Rules" section includes "Course Condition Codes" (Accept 1/2, Reject 1/2) and "Conditional Requirement" (Accept System CC: M, Reject System CC: checkbox). The "Accept System CC: M" field is circled in red.

In this case the whole requirement will be turned on when the System Condition Code of "M" is present. In some instances it may be necessary to turn off a requirement. In such a case, place the System Condition Code in the Reject System CC field.

It is also possible to turn on a sub-requirement with a System Condition code. That is done in the alternate view of the sub-requirement, general tab:



In order to turn on different requirements for each of a number of score ranges, multiple entries can be made. For example, with the ASSET Algebra test, ranges could be set up as follows and date ranges could be added if necessary:

```
#TS(0178, ,0,10)[M]
#TS(0178, ,11,23)[N]
#TS(0178, ,24,31)[O]
```

Assigning a Course

In order to assign a course to a student based on Test Scores, the entry in INCLTOP contains no spaces and the components are as follows:

#TS(Test,Form,Min Score,Max Score,Begin date, End date)<yrtr,course,credit,grade,Course Condition Code>[System Condition Code] *Begin date & End date are optional entries*

As can be seen above, when assigning a course with the #TS option, you can assign both a Course Condition code and a System Condition code.

Below is an example of how the entry would look when assigning both a Course and a Course Condition Code based on Scores from the Accuplacer Elementary Algebra Test (no System Condition Code is being assigned in this example so the entry ends after the > symbol):

	Common	Reporting	Reference/Other	Text	Limit
Header					
17	#TS(0166,,0.00,30.00)[w]				
18	#TS(0166,,30.01,120.00)<20085,MATH999,4,P,m>				
19	#TS(0163,,0.00,69.80)[h]				
20	#TS(0163,,69.80,97.39)[0]				
21	#TS(0163,,97.40,999.00)[0]				
22	#TS(0164,,0.00,51.00)[g]				
23	#TS(0164,51.01,120.00)[Y]				

If there is no need to assign a Course Condition Code, end the entry after the last comma with the greater than symbol:

#TS(0166,,100,120,Begin date,End date)<20033,MATH1000,3,A,>

This is how courses assigned through INCLTOP will appear in the audit. The Test Short Description from ST2004UI (Valid Test Codes Index) is listed in the Course Title location.

Based on your assessment scores, you must take the following course(s) if needed

```

+ 1) College Algebra
  S 08 MATH999      4.00 P      Accp E1 Alg
  
```

To have DARS assign the year/term associated with the date that the student took the test to this pseudo course, replace the entry of an actual year/term in your #TS or #PL line with the word DATE. DARS will read the date the test was taken and assign the correct year/term for processing.

In this case, your entry would look like:

```

#TS(0166,,30.01,120.00)<DATE,MATH999,4,P,m>
Or
#PL(0005,1.11,9.98,20020701,99991231)<DATE,MATH999P,K>[M]
  
```

#PL:

Using information from the Student Placement Levels screen (ST3506UG) in ISRS, you can assign a course, a course condition code or a system condition code based on a student's placement level. This is done in much the same way as with #TS.

The Student Placement Levels screen looks like this:

Student Placement Levels					
ST3506UG	01.31	Northland Community & Technical	06/03/2008		
SSN:	999127627	Last:	Cup	F:	Stanley
M:		Suff:			
Id:	00317949				
Placement					
Placement Sequence	Test Date	Load Date	Level	Source	
0005	Math Seq A	06/11/2003	06/11/2003	2.30	L Loaded
0009	Read Seq A	06/11/2003	06/11/2003	3.10	L Loaded
0013	Engl Seq A	06/11/2003	06/11/2003	2.10	L Loaded

In order to assign a Course, a Course Condition Code and/or a System Condition Code, entries like these shown below will need to be made in INCLTOP:

	Common	Reporting	Reference/Other	Text	Limits (X-line)
Header					
22	#PL(0005,0.00,1.10)	<20053,MATH999,3,P,J>	[J]		
23	#PL(0005,1.11,9.98,000000000,20020630)	<DATE,MATH888,3,P,K>	[X]		
24	#PL(0005,1.11,9.98,20020701,99991231)	<DATE,MATH888,3,P,K>	[M]		
25	#PL(0005,9.99,9.99)	<20053,MATH777,3,P,X>	[v]		
26	#PL(0009,0.00,2.09)	<20053,RDNG999,3,P,L>	[L]		
27	#PL(0009,2.10,9.98)	<20053,RDNG888,3,P,M>	[M]		
28	#PL(0009,9.99,9.99)	<20053,RDNG777,3,P,N>	[N]		
29	#PL(0013,0.00,2.30)	<20053,ENGL999,3,P,E>	[E]		
30	#PL(0013,2.31,9.98)	<20053,ENGL888,3,P,e>	[e]		
31	#PL(0013,9.99,9.99)	<20053,ENGL777,3,P,f>	[f]		

The format is: #PL(Placement Sequence #,Min placement level,Max placement level,Begin date, End date)<yrtr,course,credit,grade,Course Condition Code>[System Condition Code]
There is one less entry in the fields between the parenthesis than in #TS, because there is no form id for student placement level. Like #TS, date ranges operate identically and are optional entries.

See the INCLTOP entry line 25 shown above. A placement level of 9.99 is recorded in ST3506UG when a student is exempt from assessment testing, so the institution wants a different sub-requirement turned on when the student's placement level is 9.99 (exempt).

Like #TS, you may also have DARS automatically use the year/term associated with the test date in ST3506UG. To do so, replace the entry of an actual year/term in your #PL line with the word DATE. DARS will go out to the test date in ST3506UG and assign the correct year/term for processing.

If there is no need to assign a Course Condition Code, end the entry after the last comma with the greater than symbol:

#PL(0005,1.11,9.98,000000000,20020630)<DATE,MATH888,3,P,>[X]

REMINDERS:

*Don't forget to document the use of Condition Codes in the correct Condition Descriptions table in DARwin.

**Are you using #PD, #CO, #PR? DARS is limited to a total of 100 entries of the combined #TS, #PD, #CO, #PR and #PL INCLTOP items.