

Updating the Goal Area changes in MnSCU Transfer Articulation Tables

Question: How do I update the Transfer Articulation table when a MnSCU institution removes the Goal area designation from a course?
and

How do I update the Transfer Articulation table when a MnSCU institution adds a Goal area designation to a course?

Transfer Articulation rules should be changed when significant content changes in a Source course. A date range on a Source course is typically encoded when the content of the MnTC Goal has changed.

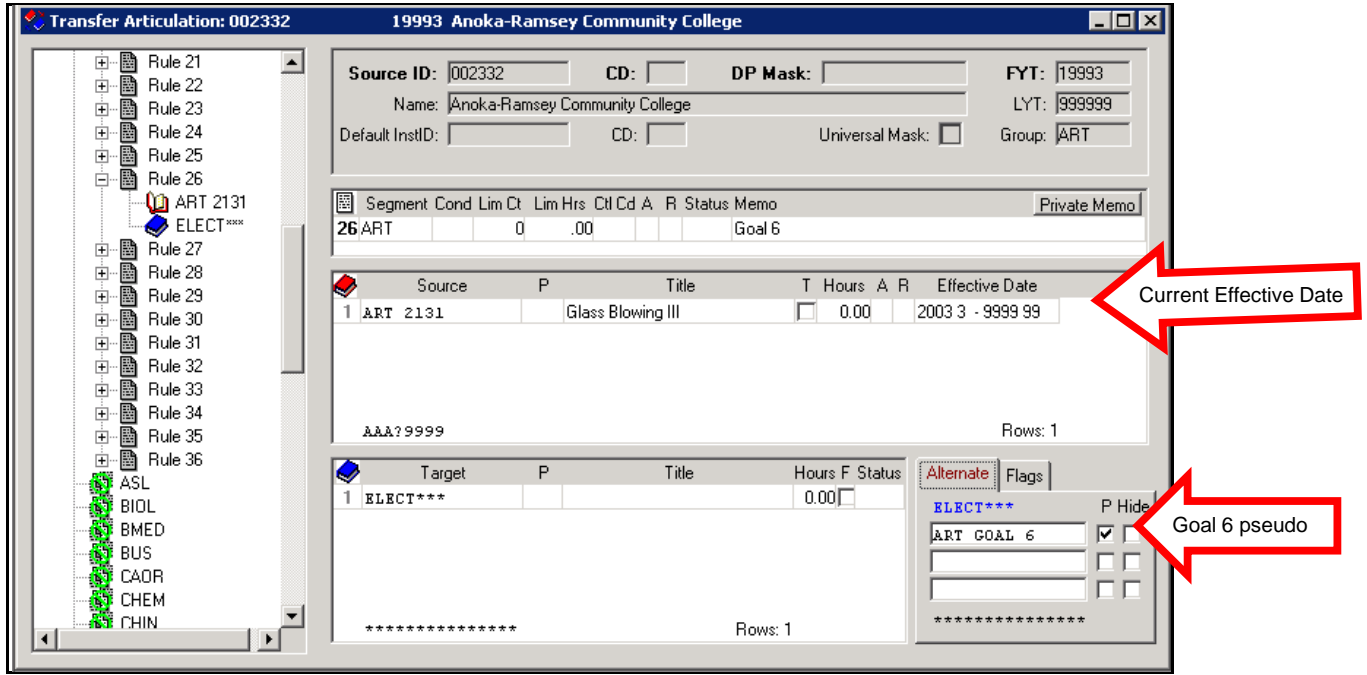
Updating the Source Transfer Articulation table requires two changes:

1. End-date Effective Date field for the source rule.
2. Add a new rule, following the end-dated rule, with later Effective Dates.

How do I update the Transfer Articulation table when a MnSCU institution removes the Goal area designation from a course?

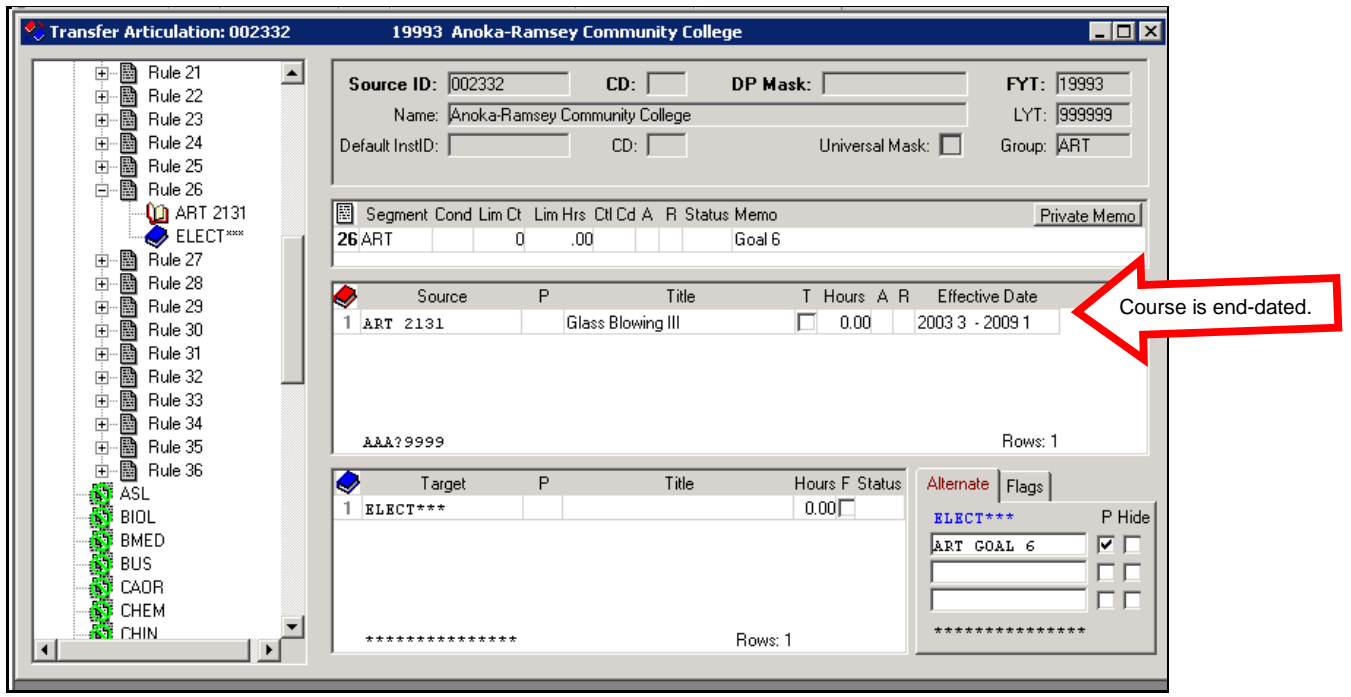
In our example, ART 2131, Glass Blowing III, from Anoka Ramsey Community College, taken between Fall 2002 and Summer 2008, was a Goal 6 course. Beginning with Fall 2008, ART 2131, Glass Blowing III, no longer carries a Goal 6 designation.

In the screen shot following, ART 2131, Glass Blowing III, articulates to ELECT***, and Alternate ART GOAL 6. The Effective Date range for the course is 20033-999999.



1. On the Source TA table, end-date Effective Date field for the current rule. In our example, ART 2131 was Goal 6 through summer of 2008.

Change the end-date of 9999 99 to 2009 1.



2. Add a new rule, following the end-dated rule, with later Effective Dates. You will need to insert a rule after the end-dated rule.

In the example below, the Goal change is reflected in the new rule by removing the Alternate. The new ART 2131 rule articulates to ELECT***, and no alternate.

How do I update the Transfer Articulation table when a MnSCU institution adds a Goal area designation?

In our example, BIOL1108, Biology of Women, from Anoka Ramsey Community College, articulates as ELECT***, and Alternate Goal 7. In Spring 2008, the course was Goal 3 and 7.

1. On the Source TA table, end-date Effective Date field for the current rule. In our example below, BIOL1108 carried Goal 7.

Add Effective Date range for the course. The date range covers the period of time the course was Goal 7. In the example below, the Effective Date is 19993 – 20095.

The screenshot shows the 'Transfer Articulation: 002332' window for '19993 Anoka-Ramsey Community College'. The left sidebar shows a tree view of rules under 'BIOL', with 'BIOL1108' and 'ELECT***' selected. The main window displays the following data:

Source ID: 002332 CD: DP Mask: FYT: 19993
 Name: Anoka-Ramsey Community College LYT: 999999
 Default InstID: CD: Universal Mask: Group: BIOL

Segment	Cond	Lim Ct	Lim Hrs	Ctl Cd	A	R	Status	Memo
8	BIOL		0	.00				Goal 7

Source	P	Title	T	Hours	A	R	Effective Date
1	BIOL1108	Biology of Women	<input type="checkbox"/>	0.00			1999 3 - 2009 5

AAA?9999 Rows: 1

Target	P	Title	Hours	F	Status
1	ELECT***		0.00	<input type="checkbox"/>	

Alternate Flags

ELECT*** P Hide
 GOAL 7

A red arrow points to the 'Effective Date' field in the source table, labeled 'End-date course'.

2. Add a new rule, following the end-dated rule, with later Effective Dates. You will need to insert a rule after the end-dated rule. In the example below, the new rule, with succeeding dates, carries alternates for GOAL 7, and BIOL GOAL 3 NL.

The screenshot shows the same 'Transfer Articulation: 002332' window. The left sidebar now shows 'BIOL1108' and 'ELECT***' selected, with a new 'ELECT***' rule added below. The main window displays the following data:

Source ID: 002332 CD: DP Mask: FYT: 19993
 Name: Anoka-Ramsey Community College LYT: 999999
 Default InstID: CD: Universal Mask: Group: BIOL

Segment	Cond	Lim Ct	Lim Hrs	Ctl Cd	A	R	Status	Memo
9	BIOL		0	.00				Goals 7 and 3, no-lab

Source	P	Title	T	Hours	A	R	Effective Date
1	BIOL1108	Biology of Women	<input type="checkbox"/>	0.00			2009 5 - 9999 99

AAA?9999 Rows: 1

Target	P	Title	Hours	F	Status
1	ELECT***		0.00	<input type="checkbox"/>	

Alternate Flags

ELECT*** P Hide
 GOAL 7
 BIOL GOAL 3 NL

A red arrow points to the 'Effective Date' field in the source table, labeled 'Later dates added'. Another red arrow points to the 'BIOL GOAL 3 NL' alternate, labeled 'New alternate added'.

MnSCU Curriculum Changes are posted on our website each academic year, at:

<http://www.dars.mntransfer.org/updates/currchanges/changesmenu.html>

Below is an example of the curriculum changes for Anoka Ramsey Community College for the 2008-2009 academic year.

Anoka Ramsey Community College							
Catalog/Curriculum Changes 2008-2009				OOC Initial Review:		Institution Review:	
Types of Changes (TOC):				12/9/2008		2/1/2009	
A - New Course		B - Course Name Change		C - Course Description Change		D - Course dropped	
E - Course Credit Value Change		F - Discipline Change		M- MnTC goal requirement change		Q- Course number change, content unchanged	
R - MnTC Goal Course							
Term of Change	MnTC Goal Area	Current/ New Credit	Previous Credit	Course Number	Current Course Title	Previous Course Title	TOC
Fall 2008		1.00		ART 1143	Introduction to Figure Drawing		A
Fall 2008		3.00		ART 1168	Photography IV		A
Summer 2008	Removed	3.00		ART 2131	Glass Blowing III		M
Summer 2008	Removed	3.00		ART 2132	Glass Blowing IV		M
Fall 2008		3.00		ART 2253	Ceramics III		A
Fall 2008		3.00		ART 2254	Ceramics IV		A
Spring 2009		3.00		ASL 1103	Deaf Culture		A
Spring 2008	3 (no lab)	4.00		BIOL 1104	The Human Body - Structure and Function		R
Spring 2008	3 (no lab), 7	3.00		BIOL 1108	Biology of Women		R
Fall 2008	3 (lab)	4.00	3.00	BIOL 2202	Genetics		E, R
Fall 2008		1.00		BIOL 2203	Genetics-LAB		D
Fall 2008	3 (lab)	4.00		BIOL 2207	Plant Biology		R
Fall 2008	3 (lab)	4.00		BIOL 2208	Cell Biology		A
Fall 2008	3 (lab)	4.00		BIOL 2209	General Ecology		R
Fall 2008		3.00		BMED 2300	Introduction to Quality Assurance		A
Fall 2008		3.00		BUS 0900	Computer Basics		D
Summer 2008	Removed	3.00		BUS 1101	Introduction to Business		M
Summer 2008	Removed	3.00		BUS 1103	Human Relations in the Workplace		M
Fall 2008		4.00		BUS 1133	Accounting Procedures		D
Summer 2008	Removed	3.00		BUS 1122	Business Ethics and Social Issues		M
Summer 2008	Removed	4.00		BUS 1125	Financial Accounting		M
Fall 2008		1.00		BUS 1148	Promotional Tactics for Small Business		A
Fall 2008		4.00	3.00	BUS 1155	Microcomputer Word Processing		E
Summer 2008	Removed	3.00		BUS 1221	Supervision		M
Fall 2008		3.00		BUS 2141	Personal Finance	Introduction to Financial Plannin	B
Summer 2008	Removed	4.00		BUS 2142	Principles of Marketing		M
Fall 2008		3.00	2.00	BUS 2144	Principles of Advertising		E
Fall 2008		3.00		BUS 2217	Employment Law for Business		A
Summer 2008	Removed	3.00		BUS 2240	Introduction to International Business		M
Summer 2008	Removed	4.00		BUS 2244	Principles of Management		M
Fall 2008		1.00		CAOR 1100	Career Development Workshop	Career Planning Workshop	B

TES: Transfer evaluation System at:

http://tes.collegesource.com/TES_home.asp, allows you to research course changes from one catalog edition to another.

TES[®] : TRANSFER EVALUATION SYSTEM powered by COLLEGE SOURCE

[send us your questions or comments](#)

Home	TES [®] : TRANSFER EVALUATION SYSTEM
Course Finder	USER: MARY DANDREA
Course List Report	INSTITUTION: MINNESOTA STATE UNIVERSITY MOORHEAD
Equivalency Report	ACCOUNT: 016665
Equivalency Mgr	
Evaluation Tracker	
Advanced Tools	course finder Search for course descriptions from a database containing millions of records. Access complete course details, including course title, course code, and credits. View institution profiles, including accreditation, calendar/unit, and more.
Change Password	evaluation tracker Route course descriptions and proposed equivalencies to faculty and staff for evaluation. Track the approval process and add notes as needed. Store the results as an equivalency, if desired, and the log of evaluation activity for later review.
Support	equivalency manager Create and manage course equivalencies between your course inventory and other institutions. Create both simple and complex articulations. Group articulations for uses like program-to-program articulations, general studies packages, or statewide initiatives.
Log Out	advanced tools Employ robust search tools for proactive equivalency building and research course changes from one catalog edition to another.

ACCELERATE EDUCATION

Copyright ©2010 CollegeSource, Inc - All rights reserved.
Site Last Updated : Wednesday, April 14, 2010 | [Privacy Policy](#) | [Disclaimer](#) | [About CSI](#)

To compare an institution's courses from one catalog to another, follow the path: TES > Advanced Tools > Course Change Explorer > Search for a College by Name. Once you have identified the school, select two catalogs for your search. The Course Change Explorer allows you to compare the two catalogs for "Change", "No Change", "Drop", or "New".

Click on the **VIEW** button beside the course for additional information.

Posted: 4-16-2010